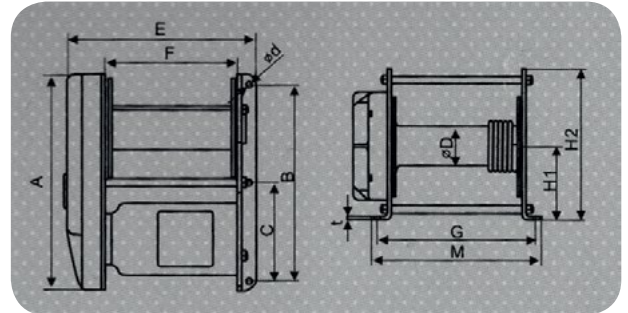
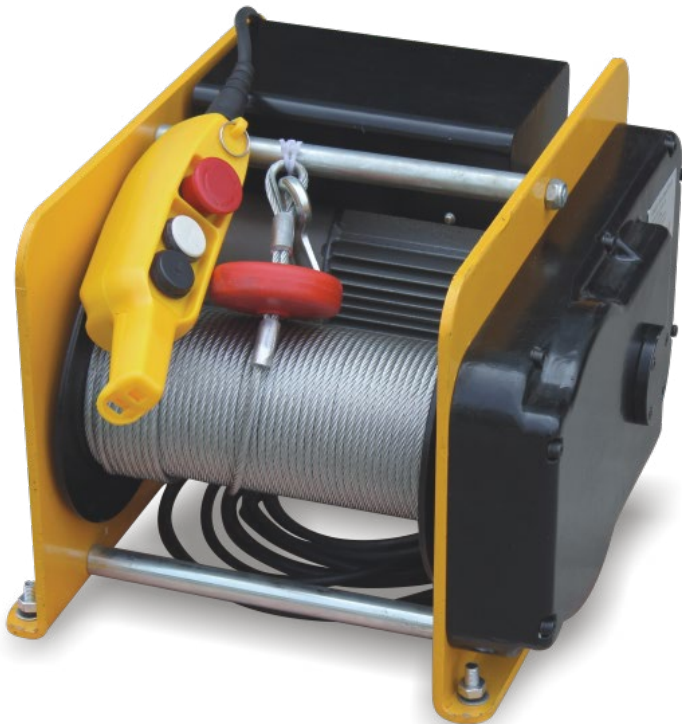


KDJ 500KG AC WINCH

KDJ SERIES 240V WINCH



The KDJ 500kg AC Winch is available in 240V without free spool. All KDJ AC Winches have electromagnetic, spring applied, fail safe brake, bi-rotational and include an enclosed drum flange.



Dimensions (mm)

A: 520	F: 270
B: 480	G: 338
C: 240	G ₁ : 188
D: 122	G ₂ : 372
d: 15	M: 370
E: 415	t: 10

OUTSTANDING FEATURES

- Lightweight and compact design for easy installation
- Planetary gears for maximum mechanical efficiency
- HD high efficiency ball bearing on all running surfaces
- Enclosed drum flange to prevent rope becoming trapped between drum and support castings
- Electromagnetic spring-applied failsafe brake
- Steel plate foot mountings
- Quiet running

TECHNICAL SPECIFICATIONS

Model	050KDAC	Motor	2.2 kw
Rating	54	Cable	6mm x 60m
Power	2200 Watts	Limit Safety Switch	No
Max Load	500kg	Work rate	S3-25% 20 min
Lift height	29m	Weight	106kg
Lift Speed	20m/min	Certification	CE Approved
Voltage	240v		